

## 2004-08 PORSCHE 997.1 XB LED TAIL LIGHT INSTALL GUIDE

**WARNING:** By reading this document, you agree it is only to be used as an educational guide. Morimoto Lighting nor its dealers make guarantees on any finished results, nor are they to be held responsible for any damage, misuse, or personal injuries. If you are unable to clearly understand and adapt the information below, professional installation is recommended.

### PACKAGE CONTENTS



2X TAIL LIGHT ASSEMBLIES



4 X MAGNET MOUNT  
RESISTORS

**IMPORTANT:** If your vehicle is equipped with anything but OEM turn signals (full assemblies, LED bulbs, or otherwise) in the front bumper or elsewhere: You may experience a hyper flash and/or problem with the sequential signal setting on these tail lights. This is not a defect in the tail light, and caused by un-matched impedance with your original vehicle settings.



TABLE OF CONTENTS

INSTALLATION PROCESS . . . . . PAGE 3

BOOST BAR LICENSE PLATE LIGHT . . . . . PAGE 8  
(SOLD SEPARATELY)

REQUIRED TOOLS

- PHILIPS HEAD SCREWDRIVER
- DETAILER SPRAY
- RAG

# INSTALLATION PROCESS

1. Open your engine cover, and remove this one (1) bolt with a philips head screwdriver holding in the driver side tail light.

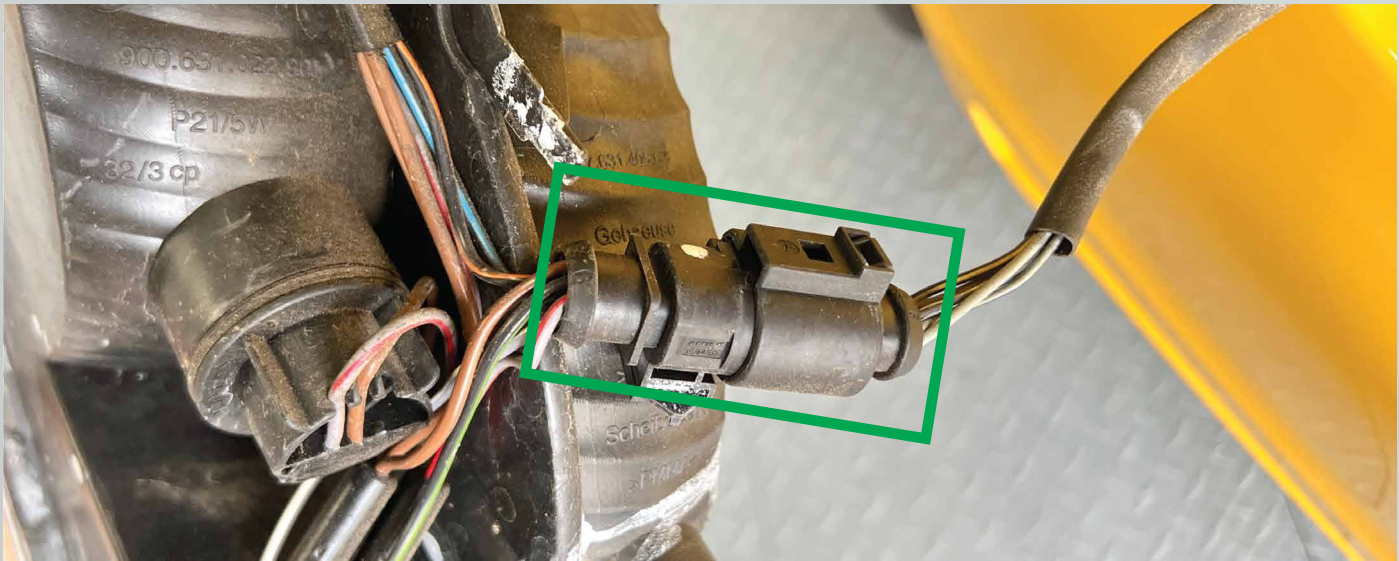


2. Slide the tail light out .

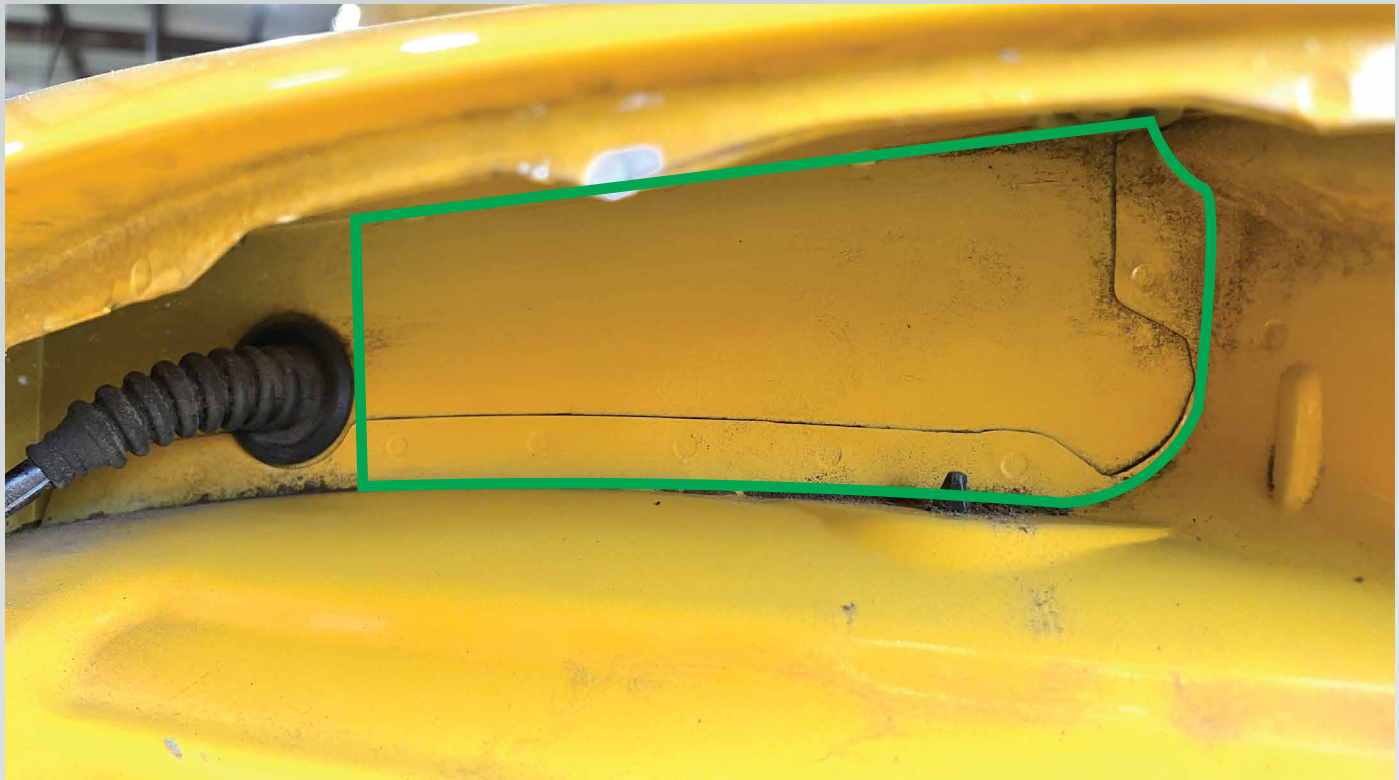




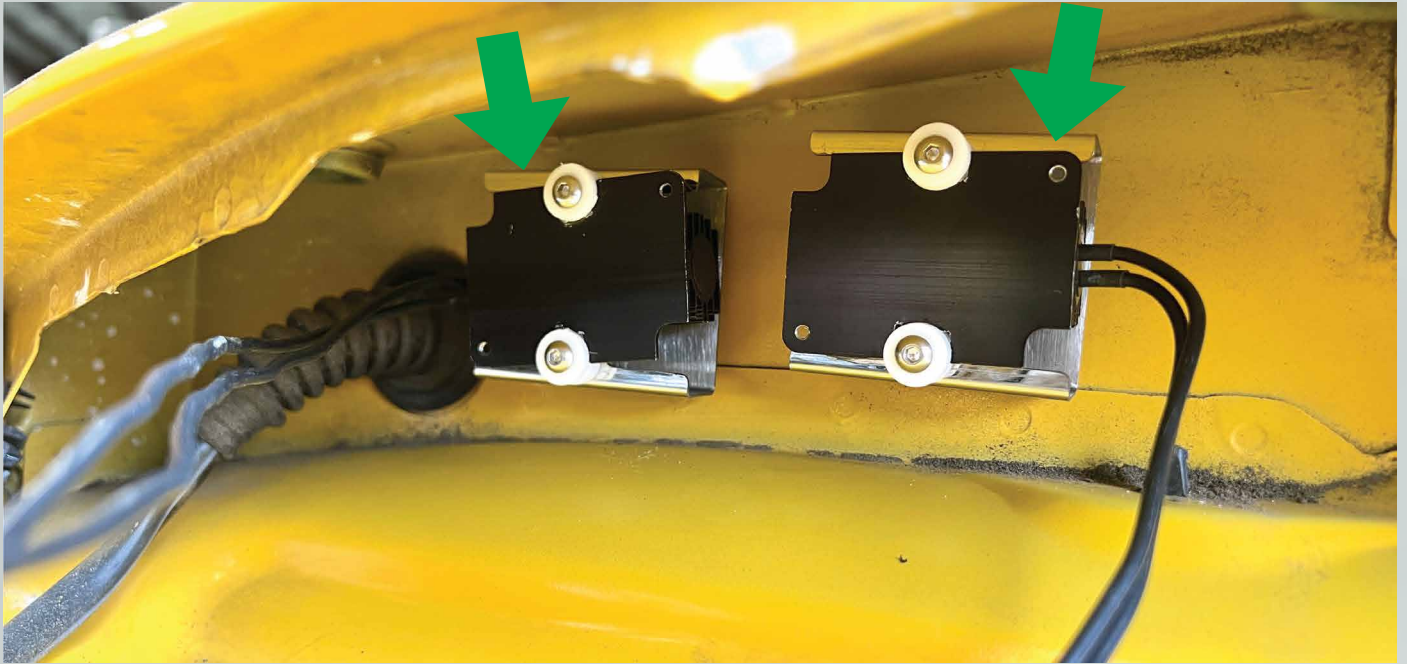
3. Unplug the tail light.



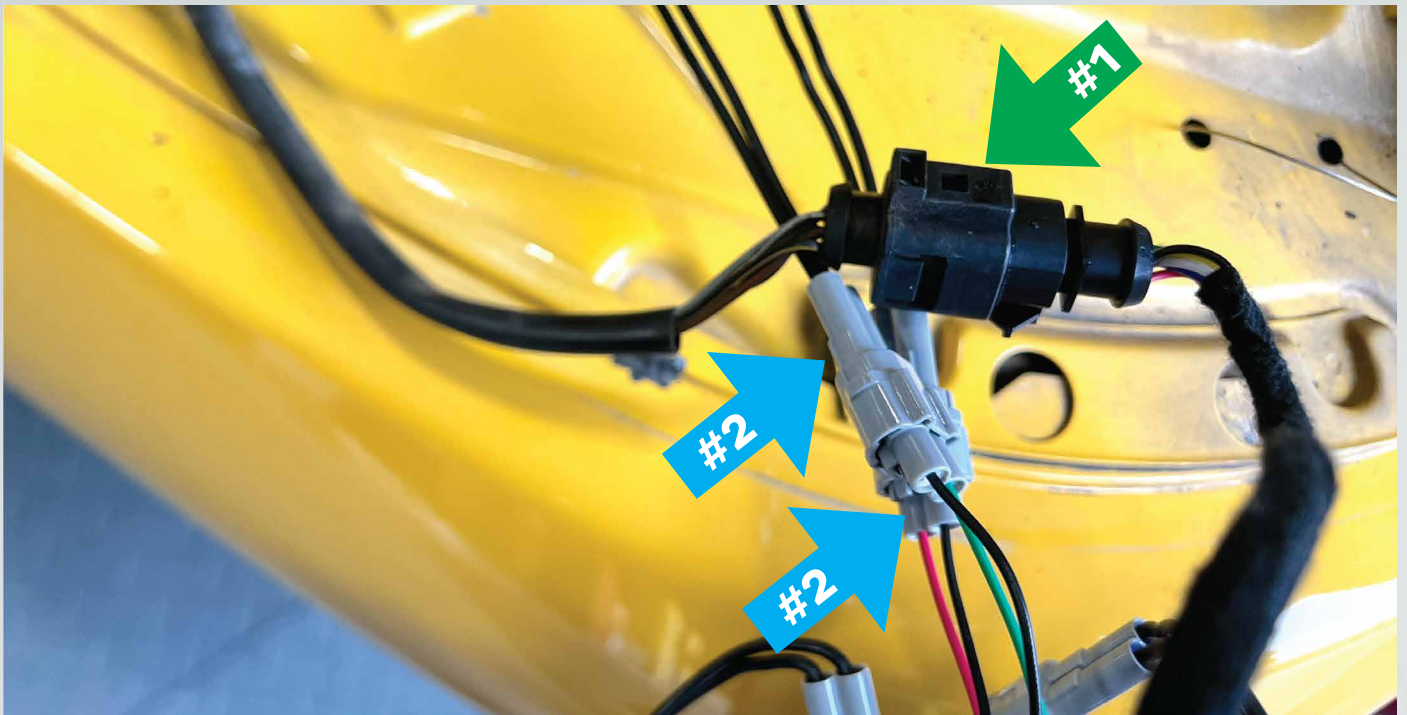
4. Clean the sheet metal behind the tail light.



5. Take the two (2) resistors, that are included with Morimoto tail lights, and install them on the sheet metal that you just cleaned behind the tail light. Note: make sure that the magnets fully seat on the metal.



6. Take your driver side Morimoto tail light and plug in the main headlight connector (#1). Also plug in the two (2) resistors to the tail light harness (#2).





7. Slide the tail light into its place on the car, make sure the side aligner gets aligned properly. If it doesn't then the corner of the tail light will stick out.



-Insert the bolt (#1) and hand tighten. Before fully tightening the bolt, make sure the two (#2) alignment tabs are lined properly as shown below. Now tighten the bolt **DO NOT USE POWER TOOLS**.



8. Repeat steps #1-7 on the other side of the car.

9. Turn the vehicle on and go through all of the functions to make sure everything works.



— ENJOY YOUR NEW MORIMOTO TAIL LIGHTS! —



(SOLD SEPARATELY)



# BOOST BAR LICENSE PLATE LIGHT INSTALL GUIDE

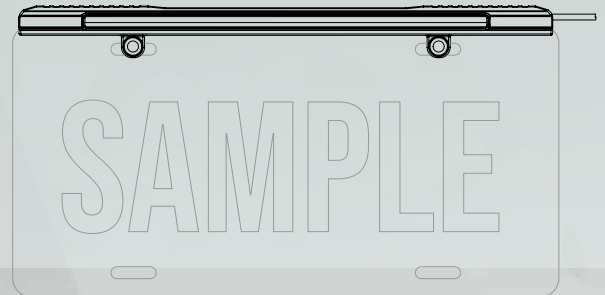
**WARNING:** By reading this document, you agree it is only to be used as an educational guide. Morimoto Lighting nor its dealers make guarantees on any finished results, nor are they to be held responsible for any damage, misuse, or personal injuries. If you are unable to clearly understand and adapt the information below, professional installation is recommended.

## PACKAGE CONTENTS

- 1x Boost Bar License Plate Light
- 1x Input Pigtail (not needed in this application)
- 1x Double Wire T-Tap (not needed in this application)

## TOOLS REQUIRED

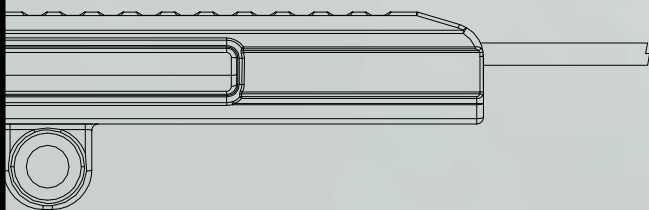
- Wire Cutters
- Zip Ties
- Philips Head Screwdriver
- T30 Bit





# INSTALLATION PROCESS

## BOOST BAR



1. Remove your license plate and license plate holder.



2. Remove the four T30 bolts holding the top of the bumper.



3. Run the wiring through the hole in the bumper, up to the top, and over to the tail light area



4. Plug the boost bar into the tail light. Disconnect the reverse light resistor (white wire). Reassemble the car.



DIRECT CONNECTION  
TO RIGHT MORIMOTO XB  
LED TAIL LIGHTS

