

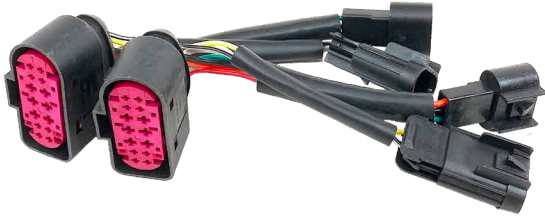
09-18 RAM 1500-5500 USER GUIDE



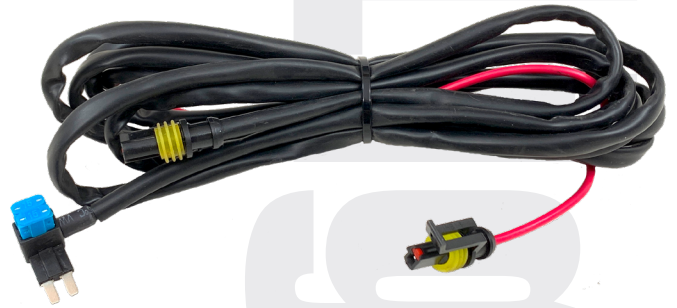
TABLE OF CONTENTS

2	REQUIRED TOOLS FOR INSTALL
3	INSTALL PROCESS
10	HEADLIGHT ALIGNMENT
11	ADDITIONAL INFORMATION

INCLUDED PARTS



ADAPTOR HARNESS



DRL HARNESS

REQUIRED TOOLS FOR INSTALL

- RATCHET
- 10MM SOCKET
- FLAT HEAD SCREWDRIVER OR TRIM REMOVAL TOOL
- PHILIPS HEAD SCREWDRIVER
- NEEDLE NOSE PLIERS

WARNING: By reading this document, you agree it is only to be used as an educational guide. GTR Lighting nor its dealers make guarantees on any finished results, nor are they to be held responsible for any damage, misuse, or personal injuries. If you are unable to clearly understand and adapt the information below, professional installation is recommended.

INSTALL PROCESS

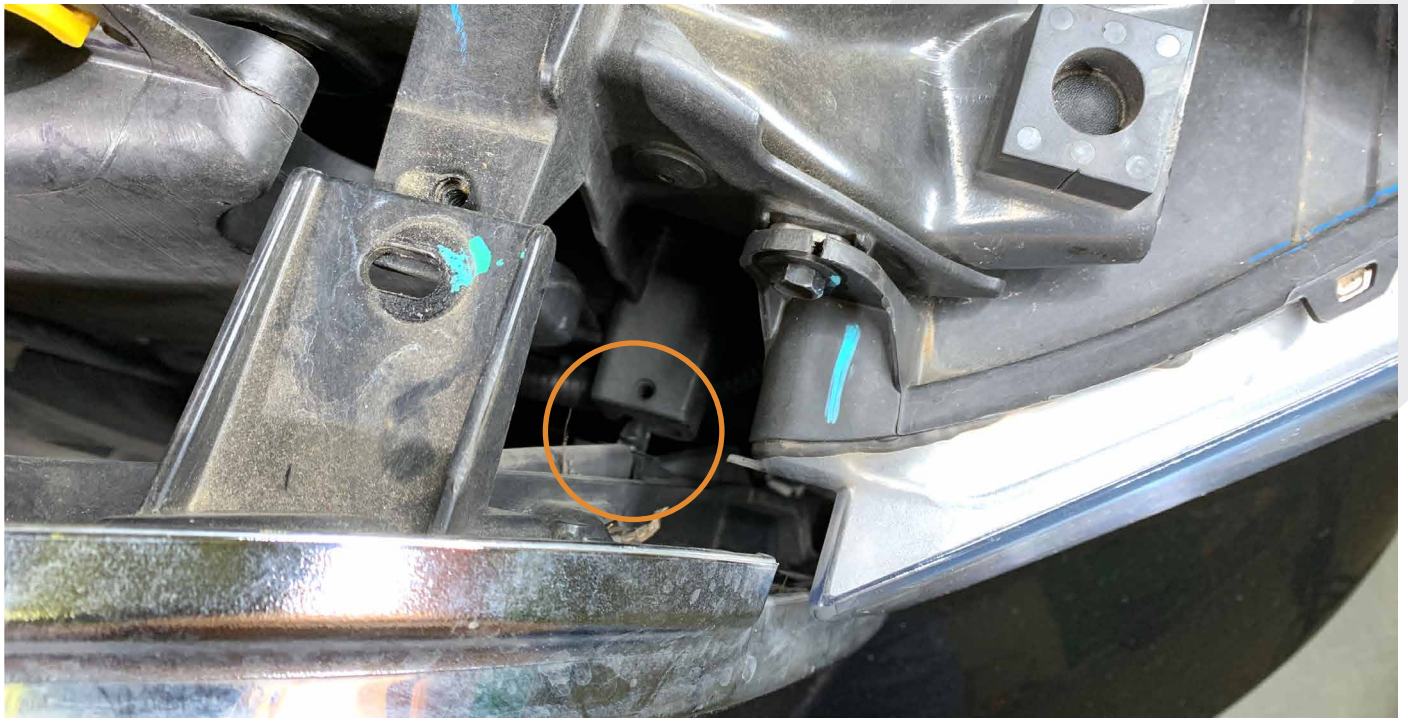
1. With a trim removal tool, remove 6 push clips that secure the radiator cover. Then remove the radiator cover off the vehicle and set it to the side.



2. Remove 4 bolts (10MM) holding the top of the grille.



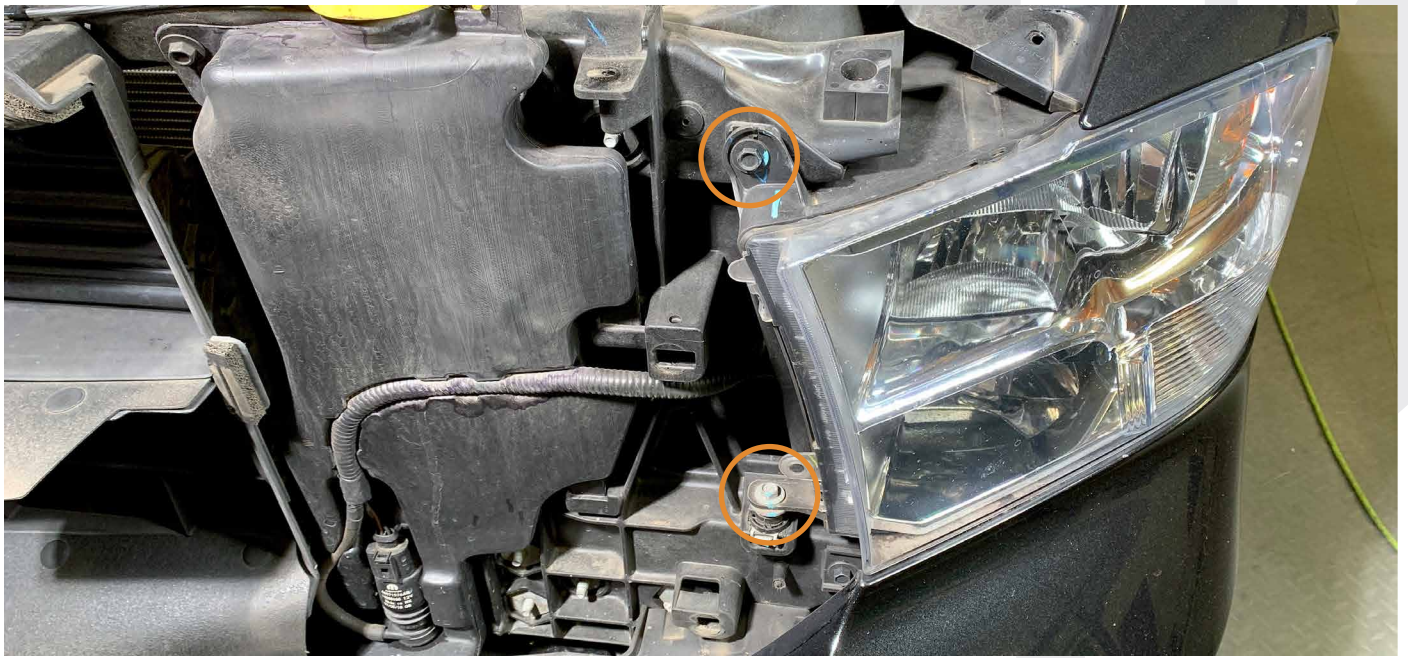
3. With a flat head screwdriver, pry the grill away from the truck to release these 4 clips.



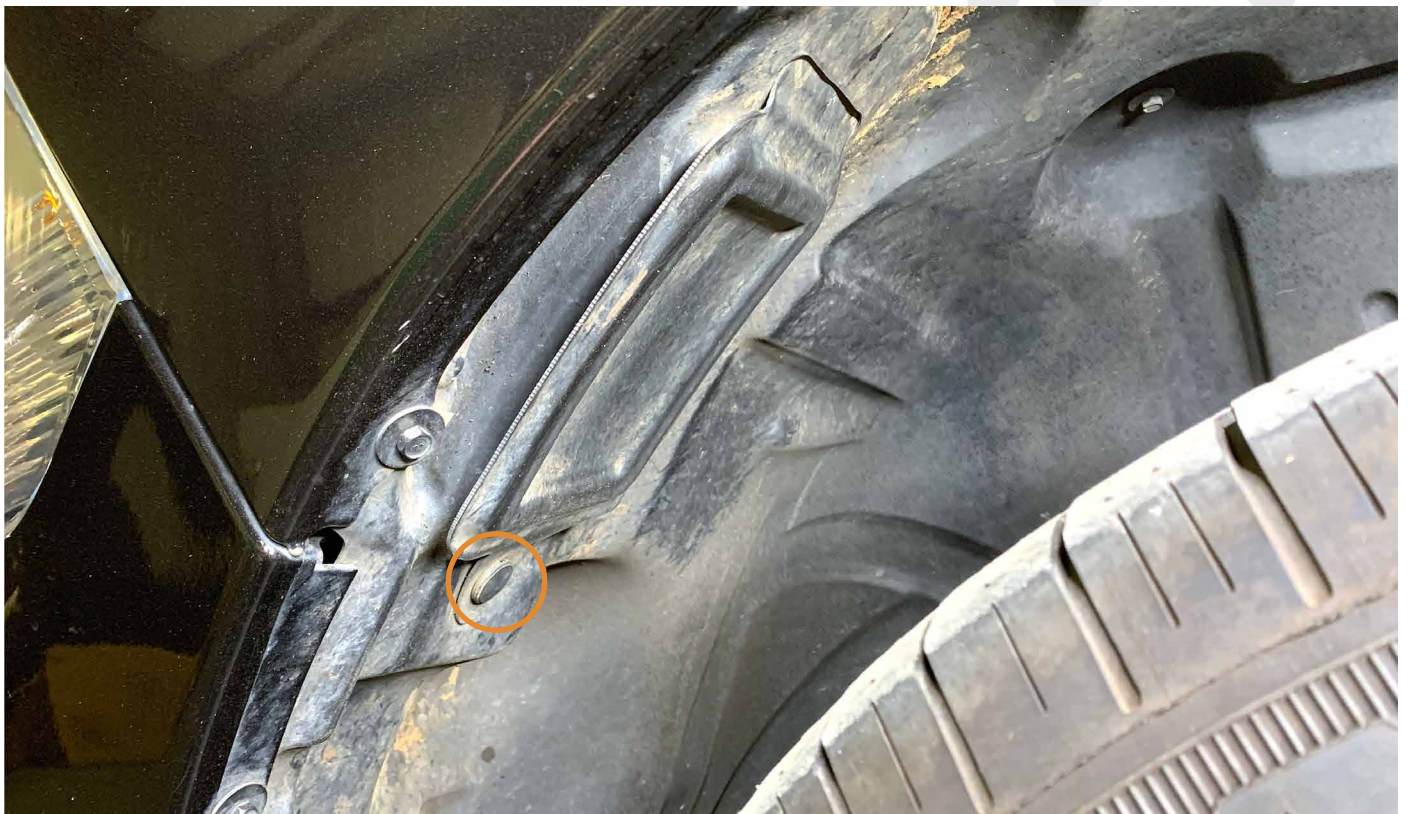
This is the location of the 4 clips.



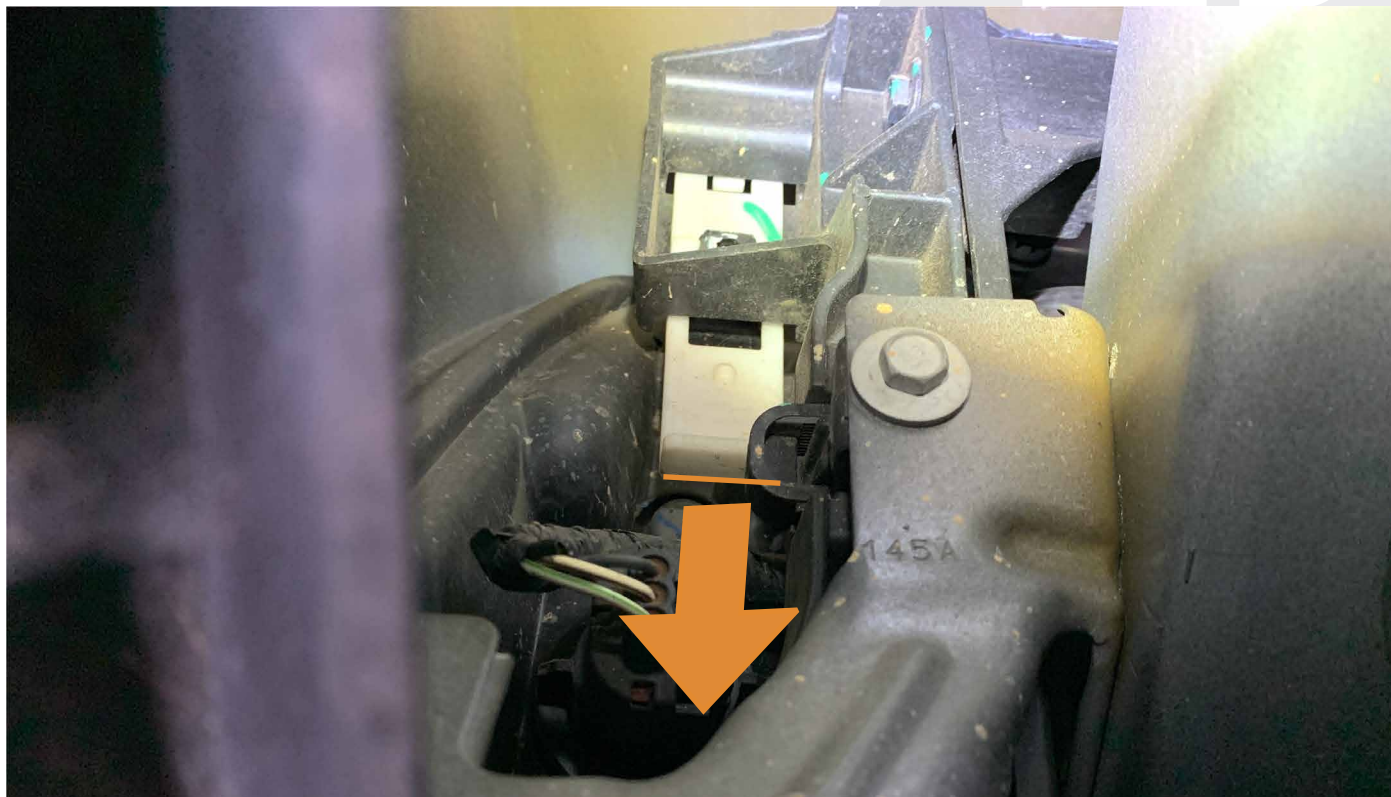
4. Remove these 2 bolts (10MM) holding the inner side of the headlight.



5. In the fender liner area, remove this push tab clip and swing the flap open.



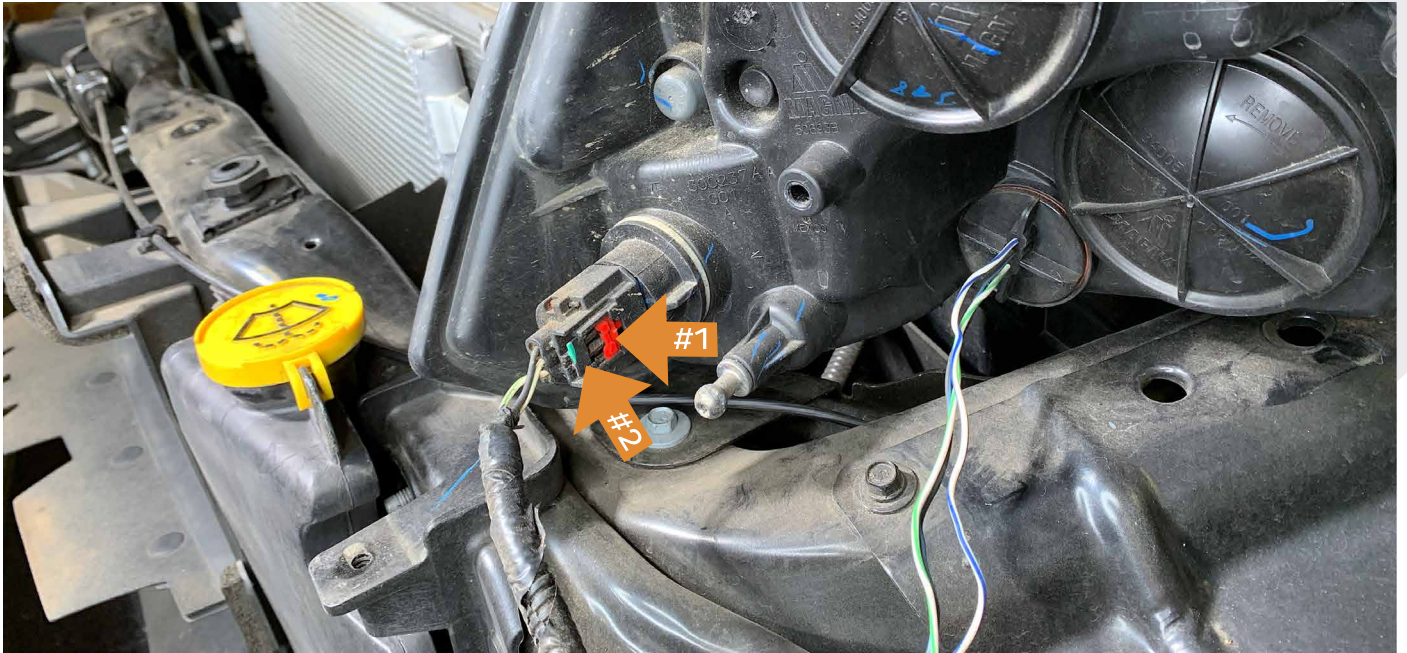
6. Looking through the hole in the fender liner, locate this white plastic tab. Pull it down until it reaches it's unlocked position.



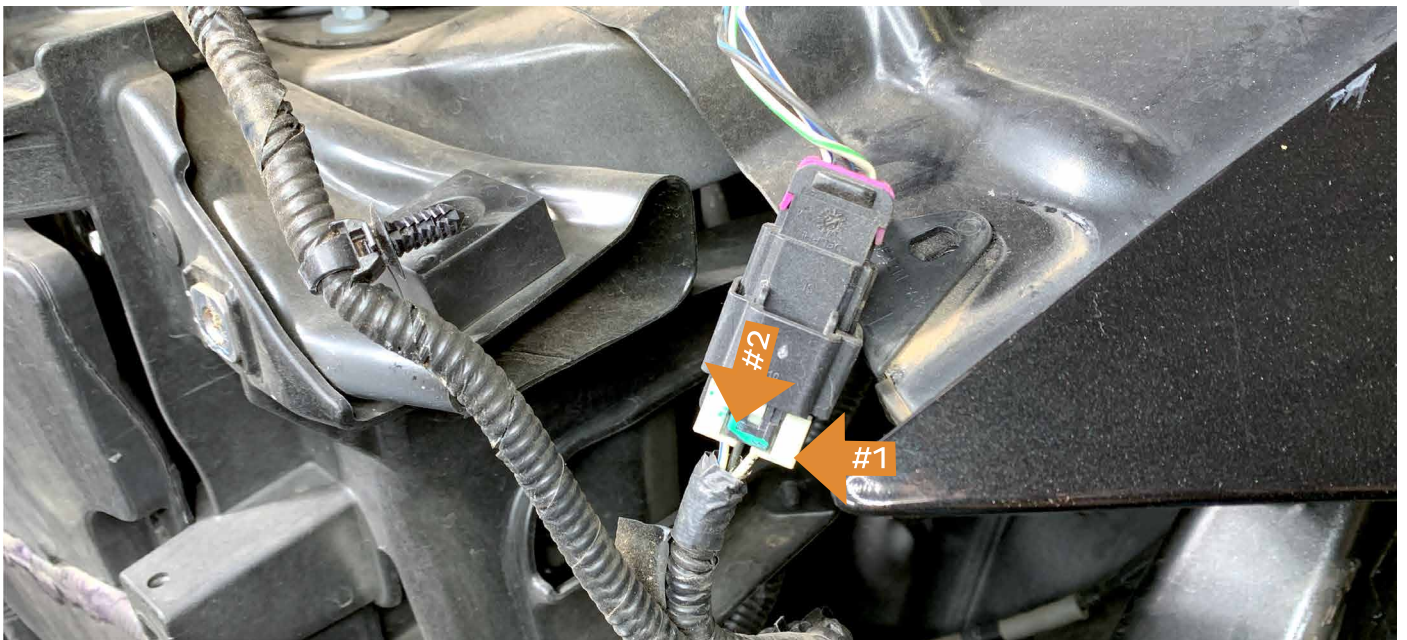
7. Using a plastic trim tool, pry the headlight forward away from the fender.



8. Disconnect the turn signal plug by sliding back the locking mechanism (#1), then press the release tab (#2), and finally slide the connector off. (If you have the OEM projector headlights you will have one big connector)



9. Disconnect the low/high plug by sliding back the locking mechanism (#1), then press the release tab (#2), and finally slide the connectors apart. Remove the headlight off the vehicle.



10. Repeat steps 4-9 on the other side of the vehicle.

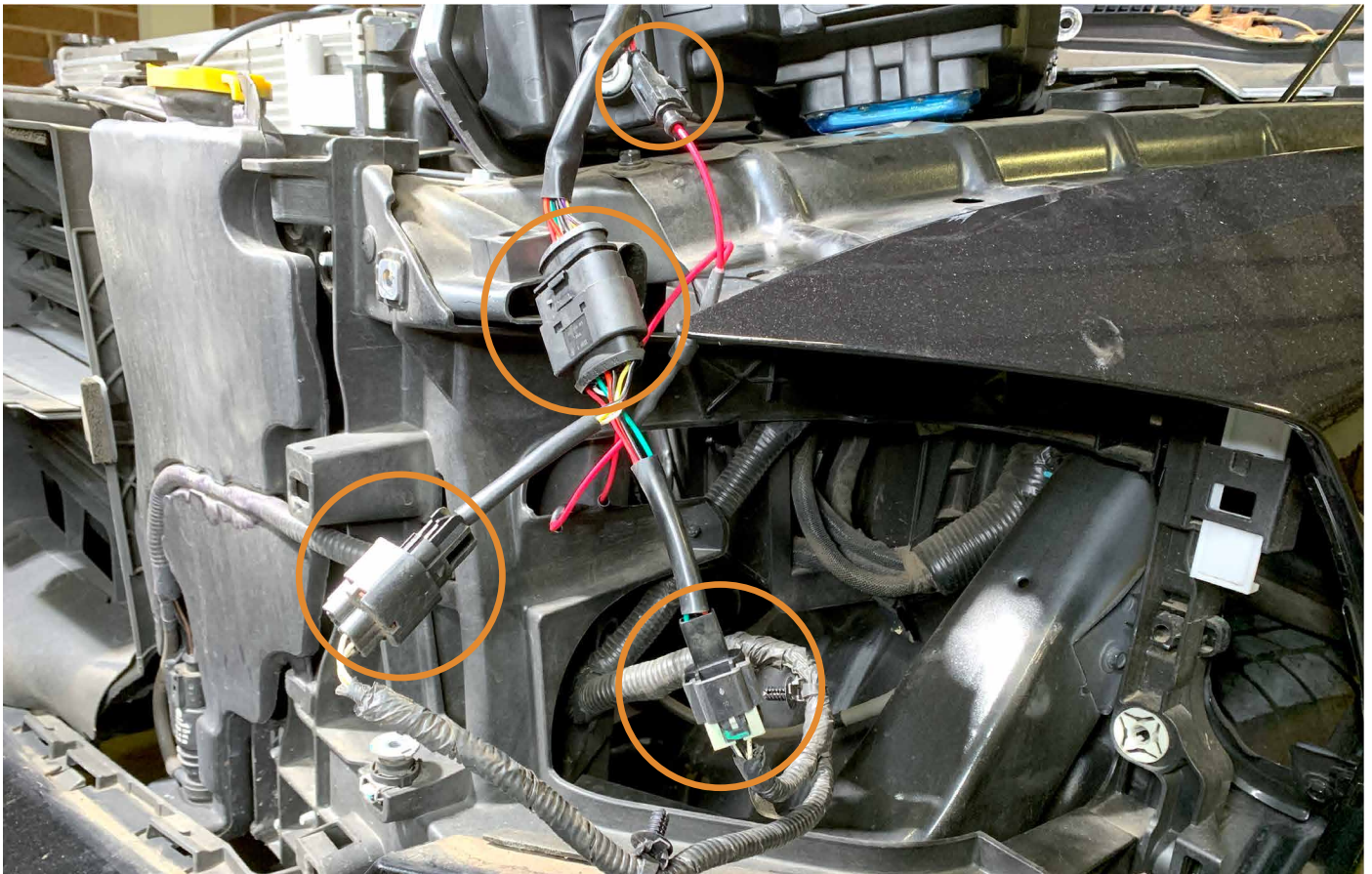
11. Remove fuse F51 (10A) from the under hood fuse box behind the driver side headlight.



12. Run the short part of the DRL harness to the driver side headlight. Run the longer side to the passenger side headlight area.



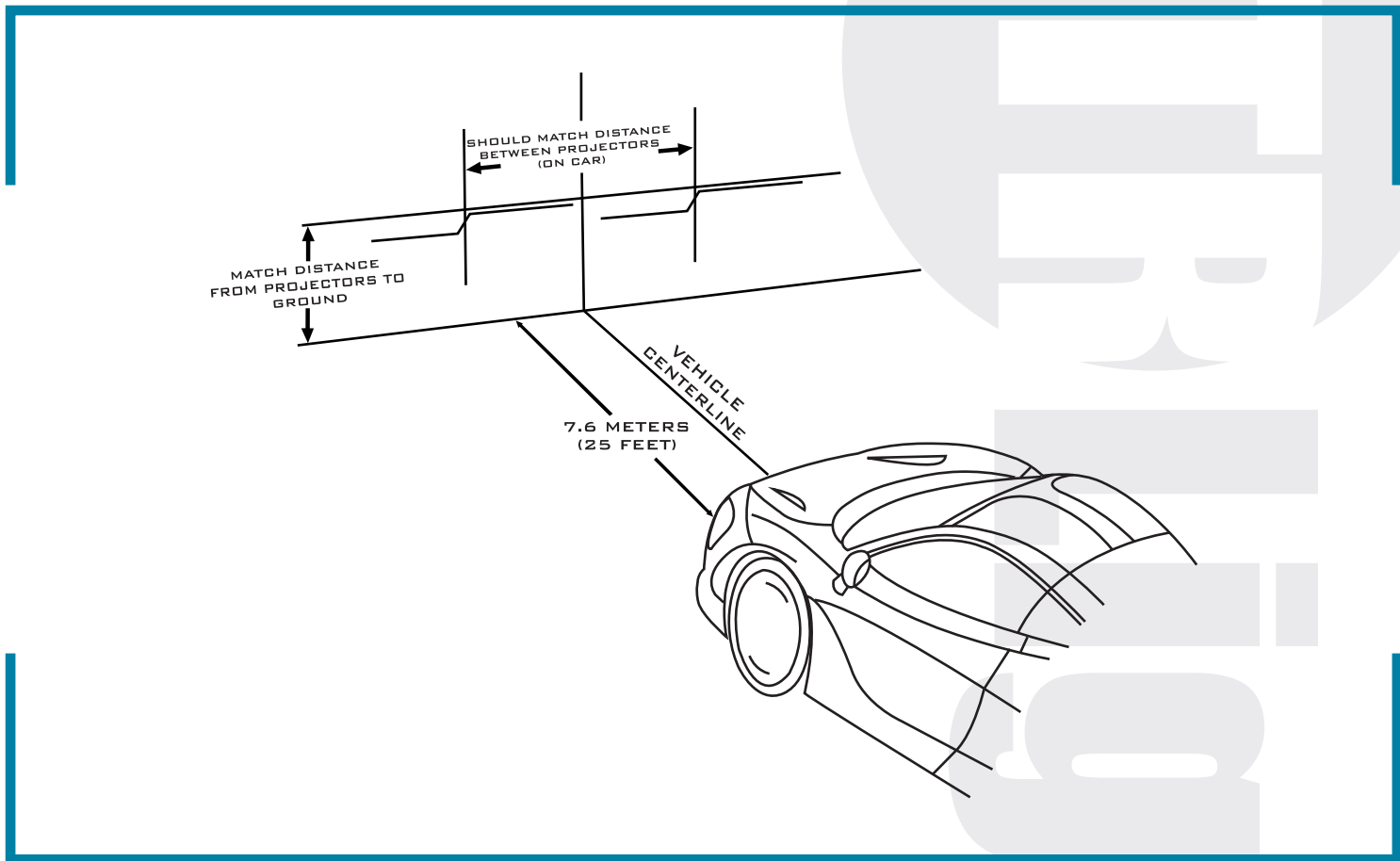
13. Plug in the included headlight adaptor into your GTR Lighting headlight (if necessary). Plug in circled connectors to your vehicle, also plug in DRL harness.



14. Plug in the other side headlight and turn the vehicle "ON" to test all of the headlight functions.

15. Reinstall the headlights into the factory position and reassemble the vehicle.

16. Align your headlights to the diagram below.



CONDENSATION VS WATER INGRESS



As the climate changes, condensation can form inside the headlights. This is normal and will evaporate over time.



This is an image of actual water ingress. Consult your dealer for warranty information and processes.

IMPORTANT: If your vehicle is equipped with anything but OEM turn signals (full assemblies, LED bulbs, or otherwise) in the tail lights or elsewhere: You may experience a hyper flash and/or problem with the sequential signal setting on these headlights. This is not a defect in the headlight, and caused by un-matched Impedance with your original vehicle settings.

For assistance, troubleshooting or warranty please either contact your dealer or give GTR Lighting a call at 813-463-0345.

ENJOY YOUR NEW CARBIDE HEADLIGHTS



Justing